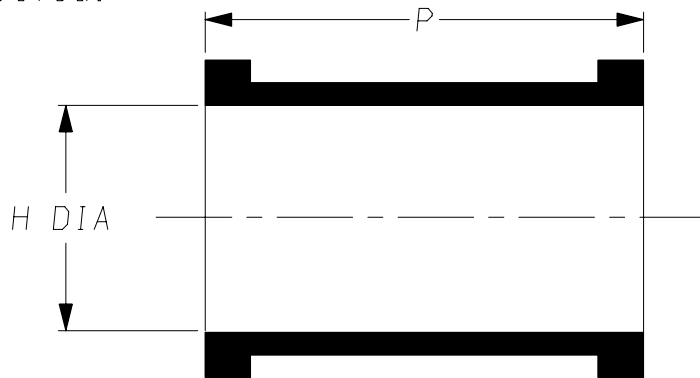
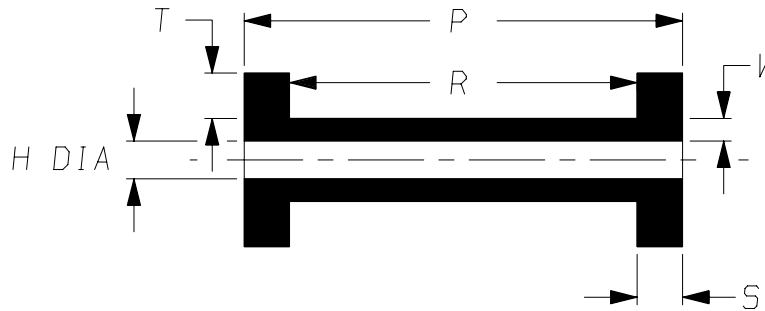


a) Part as supplied.

202W3** -12



b) Part after unrestricted recovery.



DIMENSIONS in millimetres
(in inches, for reference)

Part No.	H		P	P	R	S	T	W
	MIN	MAX	± 2	$\pm 10\%$	$\pm 10\%$	$\pm 10\%$	$\pm 10\%$	$\pm 20\%$
	a	b	a	b	b	b	b	b
202W302	20 (0.79)	9.5 (0.37)	23 (0.91)	35 (1.38)	25 (0.98)	5.0 (0.20)	3.0 (0.12)	1.5 (0.06)
202W312	26 (1.02)	12.7 (0.50)	24 (0.94)	35 (1.38)	25 (0.98)	5.0 (0.20)	3.0 (0.12)	2.0 (0.08)
202W321	6 (0.24)	3.0 (0.12)	25 (0.98)	29 (1.14)	23 (0.91)	3.0 (0.12)	3.0 (0.12)	1.5 (0.06)
202W331	15 (0.59)	6.4 (0.25)	20 (0.79)	29 (1.14)	24 (0.94)	2.5 (0.10)	2.0 (0.08)	1.5 (0.06)
202W342	30 (1.18)	18.0 (0.71)	27 (1.06)	35 (1.38)	25 (0.98)	5.0 (0.20)	3.0 (0.12)	2.0 (0.08)

Copyright (!)

The copyright in this drawing is the property of Tyco Electronics UK Ltd. The drawing is issued on the condition that it is not copied, reproduced or disclosed to a third party, either in whole or in part without the prior written consent of Tyco Electronics UK Ltd.

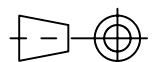
Drawn A.LILLEY. Checked Issue 4 Date February 2007 Conforms to ISO Recommendations

Approval
Design

MKTG.

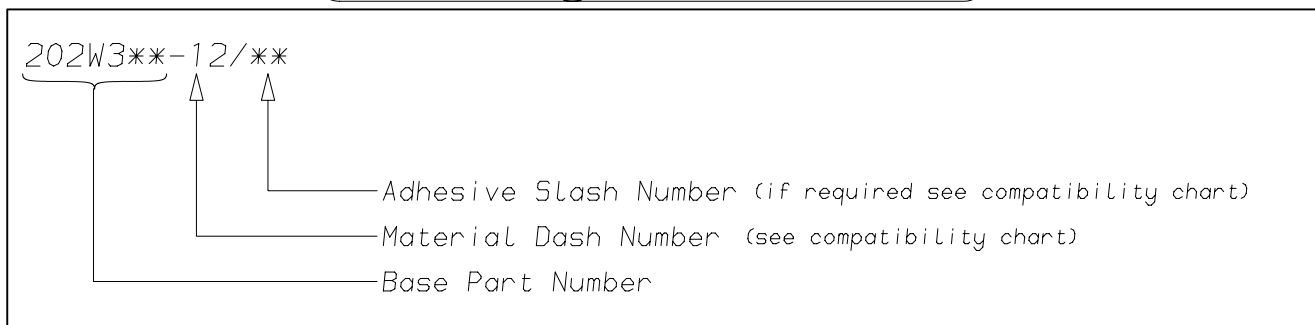
Q.A.

3rd Angle Projection
Not to Scale



Raychem		Specification Control Drawing	Part Number 202W3**-12 Issue 4
Iss.	Date	E.C.R. No.	Details of Change
2	May 1994	H0209	202W342 added & P dim
3	December 2006	CR06-DM-104	Material description name changed
3	December 2006	CR06-HM-012	Imperial dimensions added
4	February 2007	CR07-HM-001	Size 202W321 added

(Ordering Information)



(COMPATIBILITY CHART)

Material Dash Number	Material Description	SPEC Number	Coating Slash Number
-12	FLUOROELASTOMER, FLEXIBLE	RT-1312, RW-2071	/225

NOTES

- ① As supplied dimensions are for uncoated parts, when coating is added entry diameters will reduce by 1.5mm Max.

Tyco Electronics UK Ltd. Faraday Road, Swindon, Wiltshire, SN3 5HH England Telephone: (01793) 528171 Fax: 572516	Tyco Electronics Corporation 300, Constitution Drive, Menlo Park, CA 94025 USA Telephone (650) 361-3860 Fax: (650) 361-5579
Cage Code K1010	Cage Code 06090